

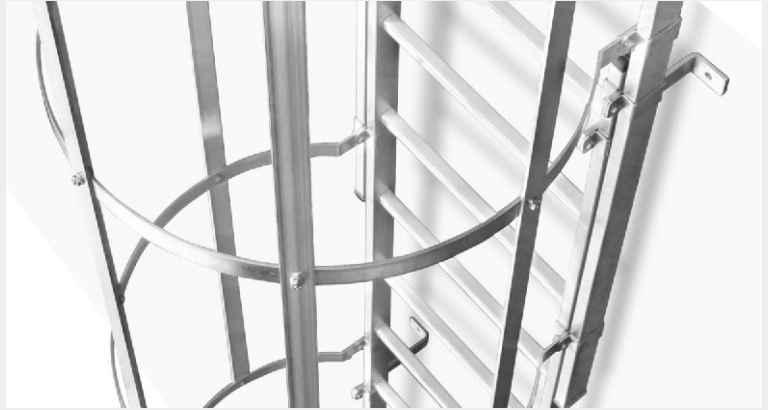
LADDER TECHNOLOGY



INFO www.ljestve.com - tel: +385 33 555 555



LADDERS WITH SAFETY CAGES



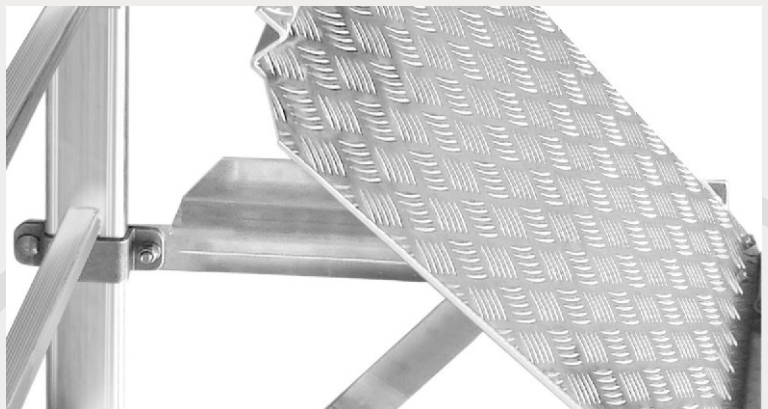
Standard CrynoLine® ladder assemblies with cages.
Optimal choice for most applications.

LADDERS WITHOUT SAFETY CAGES



Standard CrynoLine® ladder assemblies without cages.
To be used with other fall protection systems.

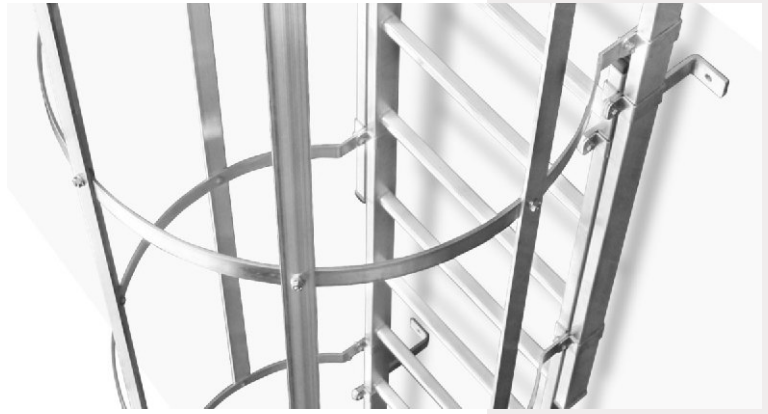
ACCESSORIES



Accessories for the CrynoLine® ladders. Auxiliary equipment
and elements essential when standard solutions are inadequate.

PRODUCTS

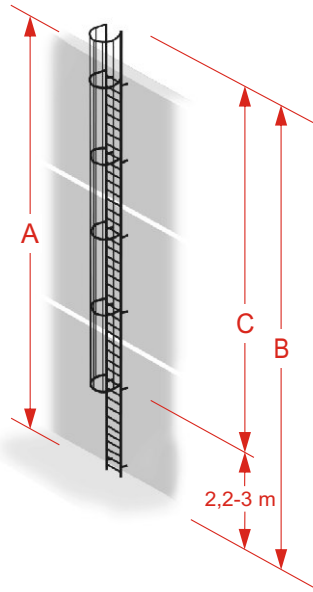




LADDERS WITH CAGES

Standard Crynoline® ladder assemblies with safety cages.

- 80 cm cage hoop assembly in accordance with the requirements of Polish regulations.
- External width of the ladder: 55 cm
- Anti-slip rungs: 28 x 28 cm (aluminium), and 25 x 35 cm (steel), 50 cm wide; prevent slipping.
- Cross-section of the side members: 58 x 25 mm (aluminium), 50 x 25 mm (steel).
- Standard anchors 200 mm long (other lengths available as accessories).
- Straight handrail.
- Quick assembly thanks to bolted joints.
- Shipped in pieces.
- Pins and bolts for affixing to walls are not included.
- Ladders are fitted with a rest platform every 10 m.



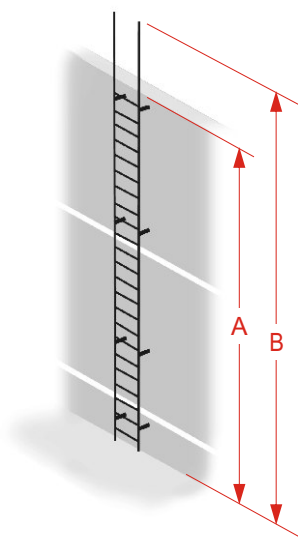
Aluminium	Anodised aluminium	Zinc-coated steel	Stainless steel	Alu-Stal. DUO	Dimensions [m]		
					A	B	C
C51023	C52023	C53023	C54023	C55023	2,3	3,4	0,8
C51031	C52031	C53031	C54031	C55031	3,1	4,2	1,6
C51037	C52037	C53037	C54037	C55037	3,7	4,8	2,4
C51045	C52045	C53045	C54045	C55045	4,5	5,6	3,2
C51054	C52054	C53054	C54054	C55054	5,4	6,5	4,0
C51062	C52062	C53062	C54062	C55062	6,2	7,3	4,8
C51071	C52071	C53071	C54071	C55071	7,1	8,2	5,6
C51079	C52079	C53079	C54079	C55079	7,9	9,0	6,4
C51085	C52085	C53085	C54085	C55085	8,5	9,6	7,2
C51093	C52093	C53093	C54093	C55093	9,3	10,4	8,0
C51102	C52102	C53102	C54102	C55102	10,2	11,3	8,8
C51110	C52110	C53110	C54110	C55110	11,0	12,1	9,6
C51119	C52119	C53119	C54119	C55119	11,9	13,0	10,4
C51127	C52127	C53127	C54127	C55127	12,7	13,8	11,2
C51133	C52133	C53133	C54133	C55133	13,3	14,4	12,0
C51142	C52142	C53142	C54142	C55142	14,2	15,3	12,8
C51150	C52150	C53150	C54150	C55150	15,0	16,1	13,6
C51158	C52158	C53158	C54158	C55158	15,8	16,9	14,4
C51167	C52167	C53167	C54167	C55167	16,7	17,8	15,2
C51175	C52175	C53175	C54175	C55175	17,5	18,6	16,0
C51181	C52181	C53181	C54181	C55181	18,1	19,2	16,8
C51190	C52190	C53190	C54190	C55190	19,0	20,1	17,6
C51198	C52198	C53198	C54198	C55198	19,8	20,9	18,4
C51207	C52207	C53207	C54207	C55207	20,7	21,8	19,2
C51215	C52215	C53215	C54215	C55215	21,5	22,6	20,0
C51224	C52224	C53224	C54224	C55224	22,4	23,5	20,8
C51229	C52229	C53229	C54229	C55229	22,9	24,0	21,6
C51238	C52238	C53238	C54238	C55238	23,8	24,9	22,4
C51246	C52246	C53246	C54246	C55246	24,6	25,7	23,2



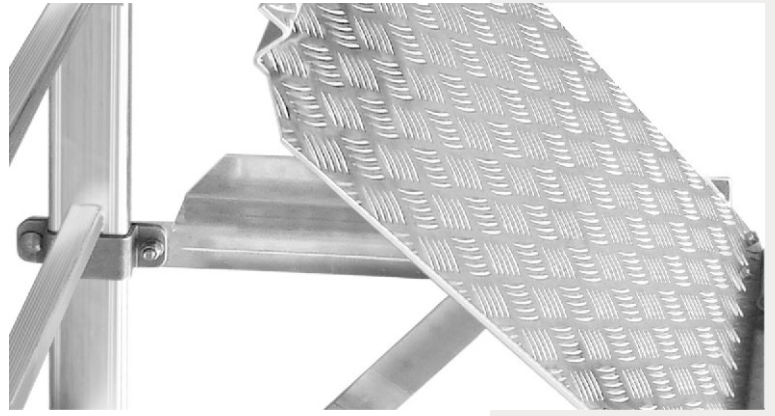
LADDERS WITHOUT CAGES

Standard Crynoline® ladder assemblies without safety cages.
To be used with other fall protection systems.

- External width of the ladder: 55 cm
- Anti-slip rungs: 28 x 28 cm (aluminium), and 25 x 35 cm (steel), 50 cm wide; prevent slipping.
- Cross-section of the side members: 58 x 25 mm (aluminium), 50 x 25 mm (steel).
- Standard anchors 200 mm long (other lengths available as accessories).
- Straight handrail
- Quick assembly thanks to bolted joints
- Shipped in pieces
- Pins and bolts for affixing to walls are not included



Aluminium	Anodised aluminium	Zinc-coated steel	Stainless steel	Dimensions [m]	
				A	B
C61023	C62023	C63023	C64023	2,3	3,4
C61031	C62031	C63031	C64031	3,1	4,2
C61037	C62037	C63037	C64037	3,7	4,8
C61045	C62045	C63045	C64045	4,5	5,6
C61054	C62054	C63054	C64054	5,4	6,5
C61062	C62062	C63062	C64062	6,2	7,3
C61071	C62071	C63071	C64071	7,1	8,2
C61079	C62079	C63079	C64079	7,9	9,0
C61085	C62085	C63085	C64085	8,5	9,6
C61093	C62093	C63093	C64093	9,3	10,4
C61102	C62102	C63102	C64102	10,2	11,3
C61110	C62110	C63110	C64110	11,0	12,1
C61119	C62119	C63119	C64119	11,9	13,0
C61127	C62127	C63127	C64127	12,7	13,8
C61133	C62133	C63133	C64133	13,3	14,4
C61142	C62142	C63142	C64142	14,2	15,3
C61150	C62150	C63150	C64150	15,0	16,1
C61158	C62158	C63158	C64158	15,8	16,9
C61167	C62167	C63167	C64167	16,7	17,8
C61175	C62175	C63175	C64175	17,5	18,6
C61181	C62181	C63181	C64181	18,1	19,2
C61190	C62190	C63190	C64190	19,0	20,1
C61198	C62198	C63198	C64198	19,8	20,9
C61207	C62207	C63207	C64207	20,7	21,8
C61215	C62215	C63215	C64215	21,5	22,6
C61224	C62224	C63224	C64224	22,4	23,5
C61229	C62229	C63229	C64229	22,9	24,0
C61238	C62238	C63238	C64238	23,8	24,9
C61246	C62246	C63246	C64246	24,6	25,7



ANCHORS

- 2-piece set of anchors for affixing the Crynoline® ladders to elements of the structure.
- Anchors should be made of the same material as the ladders.
- The set includes elements to be used for affixing the anchor to the ladder.
- Pins and bolts for affixing to the structure are not included.



Aluminium	Anodised aluminium	Zinc-coated steel	Stainless steel	Length [mm]	Clearance [mm]	Type
C01801	C02801	C03801	C04801	200	160	Fixed
C01802	C02802	C03802	C04802	200-260	160-220	Adjustable
C01803	C02803	C03803	C04803	260-320	220-280	Adjustable
C01804	C02804	C03804	C04804	320-380	280-340	Adjustable
C01805	C02805	C03805	C04805	380-440	340-400	Adjustable

HANGER

Set (2 pieces) of ladder hangers. Used to lighten the load placed on long anchors and to affix ladders to weak walls.

- Hangers should be made of the same material as the ladders.
- The set includes elements to be used for affixing the hanger to the anchor.
- Pins and bolts for affixing to the structure are not included.



Aluminium	Anodised aluminium	Zinc-coated steel	Stainless steel
C01880	C02880	C03880	C04880

MOUNTING ADAPTER

- Mounting adapters ensure an easy installation of ladders in typical construction circumstances.
- The adapters should be made of the same material as the ladders.
- One set of adapters should be used for one set of anchors.

Aluminium	Anodised aluminium	Zinc-coated steel	Stainless steel	Type
C01890	C02890	C03890	C04890	For multi-layer sheets
C01891	C02891	C03891	C04891	For weak walls
-	-	C03892	C04892	For pillars

HOLE PLUG HOLE PLUG

Set (2 pieces) of plugs with pins.



Aluminium	Anodised aluminium	Zinc-coated steel	Stainless steel	Material
C01512	C02512	C03512	C04512	Plastic

REST PLATFORM

- Rest platforms should be made of the same material as the ladders.
- The set includes elements to be used for affixing the platform to the ladder.



Aluminium	Anodised aluminium	Zinc-coated steel	Stainless steel
C01900	C02900	C03900	C04900

SUPPORT FEET

- Set of 2 feet supporting the Crynoline® ladders on the ground.
- The feet should be made of the same material as the ladders.
- The set includes elements to be used for affixing the feet to the ladder.
- Pins and bolts for affixing the feet to the base are not included.
- The adjustment range for adjustable feet is 60 mm.



Aluminium	Anodised aluminium	Zinc-coated steel	Stainless steel	Type
C01950	C02950	C03950	C04950	Fixed
C01951	C02951	C03951	C04951	Adjustable

ACCESS BLOCK

The access block protects the fixed ladders from access by unauthorised persons. The block is fitted with a padlock. The access block is highly recommended especially where the ladder is located on unguarded premises accessible to unauthorised persons.

- The set includes elements to be used for affixing the block to the ladder.
- The set includes a padlock



Aluminium	Anodised aluminium	Type
C01960	C02960	With a shelf
C01961	C02961	Without a shelf

SUSPENDED LADDER

Suspended ladders are used if there is no possibility to affix a ladder in the entry section due to the lack of space or other obstacles. A suspended ladder is fitted with hooks and can be "hung" on a fixed ladder whose bottom rung is 2.2-2.6 m above the ground.



Aluminium	Anodised aluminium
C01952	C02952

ESCAPE LADDER

The escape ladder is permanently attached to a fixed ladder which begins 2.2 m above the ground. A special mechanism makes it possible to extend the ladder when descending.



Aluminium	Anodised aluminium
C01953	C02953

HANDRAIL

- 2-piece set of handrails.
- The handrails should be made of the same material as the ladder.
- The set includes elements to be used for affixing the handrails to the ladder.
- Pins and bolts for affixing long handrails to the roof (roof parapet) are not included.
- Short handrails are 300 mm long.
- Long handrails are 500 mm long and the height adjustment range is between 700 and 1100 mm.
- Handrails in other sizes are available upon request.



Straight



With short handrails



With long handrails

Aluminium	Anodised aluminium	Zinc-coated steel	Stainless steel	Type
C01700	C02700	C03700	C04700	Straight
C01710	C02710	C03710	C04710	With short handrails
C01711	C02711	C03711	C04711	With long handrails

WALK-THRU

- Protects the person standing on the roof parapet from falling.
- Protects the metal elements of the roof from damage during the ascend to the roof.
- Facilitates a safe descent to the roof from the ladder.
- The walk-thru should be made of the same material as the ladder.
- The set includes elements to be used for affixing the handrails to the ladder.
- Elements used for affixing the ladder to the inner side of the roof parapet are not included in the set.
- Non-standard sizes are available upon request..



Aluminium	Anodised aluminium	Zinc-coated steel	Stainless steel	Dimensions [mm]	
				Width	Length
C01962	C02962	C03962	C04962	610	520
C01963	C02963	C03963	C04963	610	770
C01964	C02964	C03964	C04964	610	1020

DESCENT RUNG

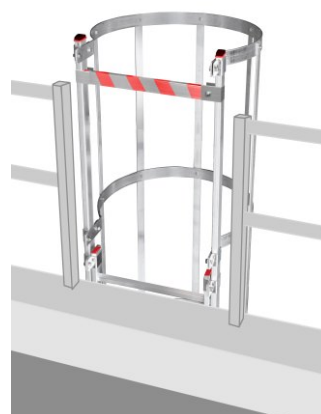
- The descent rung reduces the space between the last rung and the ridge to the distance set forth in regulations.
- The rung has a corrugated surface which prevents slips.
- The rung should be made of the same material as the ladder.
- The set includes elements to be used for affixing the ladder.



Aluminium	Anodised aluminium	Zinc-coated steel	Stainless steel	distance from the wall [mm]
C01972	C02972	C03972	C04972	165
C01973	C02973	C03973	C04973	215

GUARD RAIL

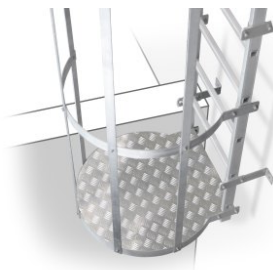
- The guard rail protects the person in the descent section from falling.
- The guard rail should be made of the same material as the ladder.
- The set includes elements to be used for affixing the guard rail to the descent bar.



Aluminium	Anodised aluminium	Zinc-coated steel	Stainless steel
C01970	C02970	C03970	C04970

PLATFORM CLOSING THE CAGE

- The platform closing the cage is used to seal off the cage where the flights are changed in the case of ladders with a multi-flight construction.
- The platform should be made of the same material as the ladder.
- The set includes elements to be used for affixing the platform to the ladder.



Aluminium	Anodised aluminium	Zinc-coated steel	Stainless steel
C01901	C02901	C03901	C04901

BASIC AND AUXILIARY PLATFORMS

- The basic platform is used for building balconies, galleries, escape exits. It can also be used to make a rest platform. The platform is equipped with a front and side railing and support consoles.
- Auxiliary platforms are used to extend the basic platform in the construction of balconies, galleries, escape exits and rest platforms. The platform is equipped with a side railing and support consoles.



Zinc-coated steel	Stainless steel	Type	Dimensions [cm]
C03902	C04902	Base	800 x 800
C03903	C04903	Extension	800 x 800

LADDERS

- Other lengths can be obtained by combining the ladders presented.
- Anti-slip rungs: 28 x 28 cm (aluminium), and 25 x 35 cm (steel), 50 cm wide; prevent slipping.
- Cross-section of the side members: 58 x 25 mm (aluminium), 50 x 25 mm (steel).
- Non-standard sizes are available upon request.



Aluminium	Anodised aluminium	Zinc-coated steel	Stainless steel	No. of rungs	Length [mm]
C01503	C02503	C03503	C04503	3	849
C01504	C02504	C03504	C04504	4	1132
C01505	C02505	C03505	C04505	5	1415
C01506	C02506	C03506	C04506	6	1698
C01507	C02507	C03507	C04507	7	1981
C01508	C02508	C03508	C04508	8	2264
C01509	C02509	C03509	C04509	9	2547
C01510	C02510	C03510	C04510	10	2830

LADDER CLAMP

- Set (2 pieces) of ladder clamps with muffs and screws.
- Clamps should be made of the same material as the ladders.



Aluminium	Anodised aluminium	Zinc-coated steel	Stainless steel
C01513	C02513	C03513	C04513